

PART OF THE NORTH 1/2 OF SEC. 24, T.6N., R.1E., S.L.B. & M.
VALLEY-LAKE ESTATES NO. 2

LOTS 6-12, 25-26

TAXING UNIT: 318

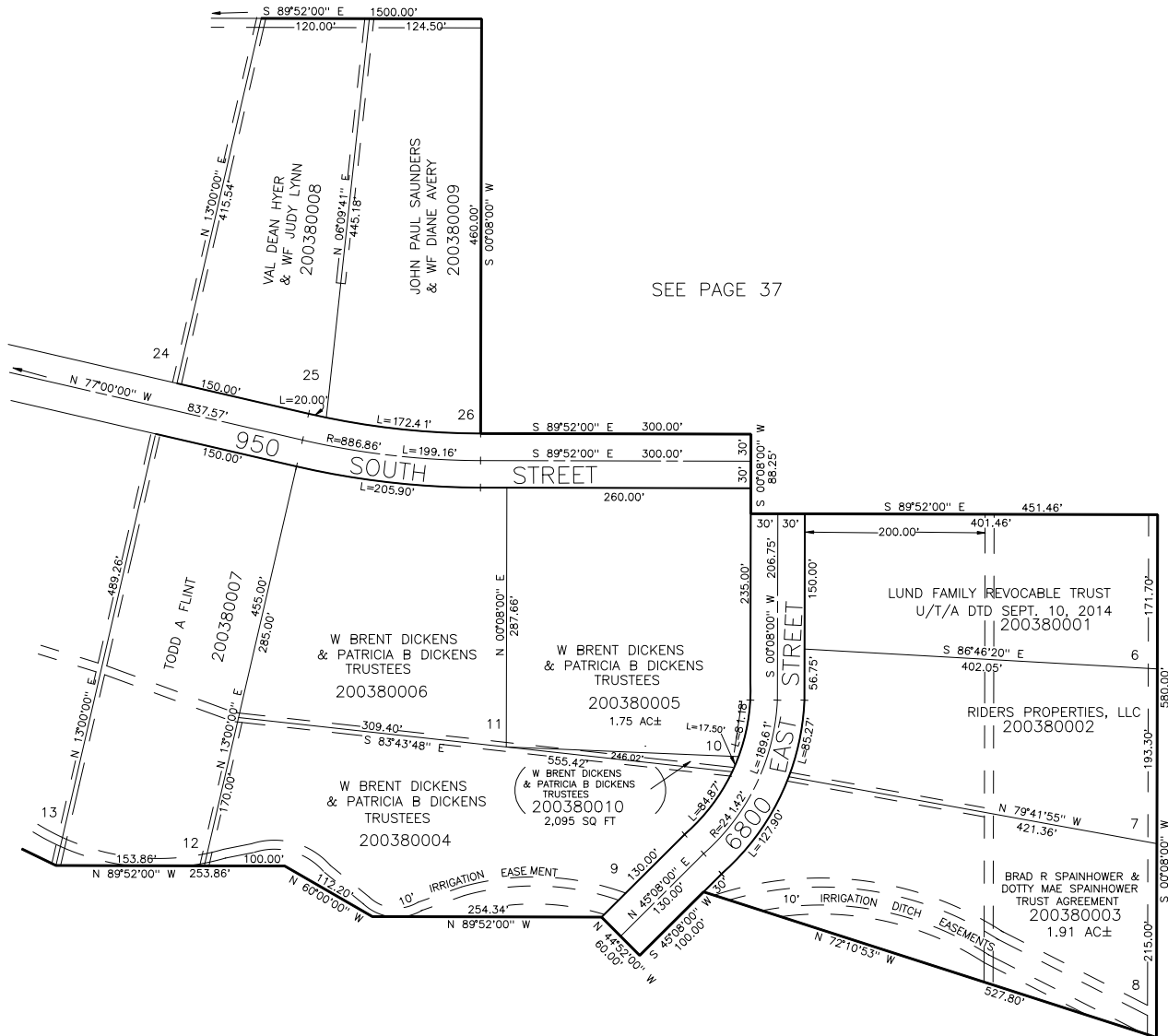
IN WEBER COUNTY

SCALE 1" = 100'

SEE PAGE 37

SEE PAGE 39

SEE PAGE 36



SEE PAGE 45

FOR COMPLETE ENG DATA SEE ORIGINAL DEDICATION PLAT IN BOOK 15, PAGE 27 OF RECORDS.

10' UTILITY & DRAINAGE EASEMENTS EACH SIDE OF PROPERTY LINES AS INDICATED BY DASHED LINES EXCEPT AS OTHERWISE SHOWN.